

Saphenous veins

Treatment

For the treatment of the Great Saphenous Vein, the CR45i catheter is used. Its 5 mm non-isolated tip and its flexibility allows for a smooth insertion. The catheter will be pulled back gradually until the entire vein is closed. This procedure will take about 5 minutes.

Saphena Magna ablation with EVRF® is minimally invasive, preventing unpleasant and possibly unsafe side effects such as pigmentation, superficial thrombophlebitis or deep vein thrombosis (DVT). Patients experience minimal discomfort and normal daily activities can be resumed within one day.



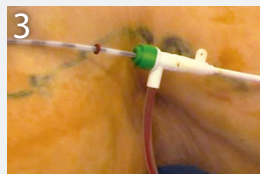
4 Step procedure



1. Insert a 6F introduction needle into the Saphena Magna vein.



2. Insert a guide wire through the needle into the vein. Open the vein by sliding a dilatator over the guide wire.



3. Replace the guide wire with a CR45i catheter and move the catheter up the vein. Position the catheter correctly with echo Doppler guidance.



4. Press the foot pedal to send an RF signal into the vein. A warning signal and light on the EVRF® appear when the catheter needs to be retracted. Repeat the procedure for the whole vein.

Clinical trial

Endovenous saphenous ablation using F Care Systems' EVRF® device and CR45i catheters.

Department of Vascular Surgery and Phlebology, Algemeen Stedelijk Ziekenhuis Aalst-Wetteren-Geraardsbergen, Dr. S. Spreybroeck

Treating veins with EVRF monopolar radiofrequency - 5 years follow-up results.

Semmelweis University Hospital, Budapest Hungary, Dr. Attila Szabo.

EVRF®

ENDOVENOUS RADIO FREQUENCY

Needles and catheters

The advantages

For the patient

- No pain during or after the treatment
- Day clinic walk-in walk-out procedure
- Can resume daily activities within 24 hours after treatment
- Very good cosmetic outcome
- No scars, bruising or swelling
- Quick relief from symptoms

For the doctor

- Easy and fast procedure
- Very flexible catheter - many applications
- No skin coloration
- Good visibility under ultrasound - fast positioning of catheter
- Same catheter can be used for large collateral veins and perforating veins

Technical specifications

CR45i

- | | |
|------------|--------------------|
| • Diameter | 1.9 mm |
| • Length | 1190 mm |
| • Weight | 34 gr |
| • Coating | PTFE |
| • Tip | Rounded Metal 5 mm |



F Care Systems NV
Oosterveldlaan 99
2610 Wilrijk - Belgium
Tel: +32 3 451 51 45
Fax: +32 3 451 51 39
info@fcaresystems.com
www.fcaresystems.com

